



Transportation Alliance IIJA Discretionary Grant Program

Serge Phillips, MnDOT

Jody Martinson, SRF Consulting Group

MnDOT IIJA Grants

- IIJA: An unprecedented \$100 billion plus available in discretionary grants
- Challenge was to successfully leverage resources to take advantage of opportunities
- Developing an internal grants team, led by Todd Clarkowski, and bringing SRF on to guide our grants process were good moves for MnDOT

MnDOT IJA Grants

- The State of MN received \$219 million from 42 successful grant applications in FFY 2022; higher than our predicted percentage
 - Local projects like the Moorhead Grade Crossing and Highway 212 in Carver County finally received grant funding to move forward with their projects after many years
- Continued success in FFY 2023 will mean learning from debriefings, meeting equity and Justice 40 thresholds, and leveraging the technical assistance and matching funds provided by the state legislature this spring
 - Regional partnerships will be crucial in developing projects and completing grant agreements when awards are received

MnDOT IIJA Grants

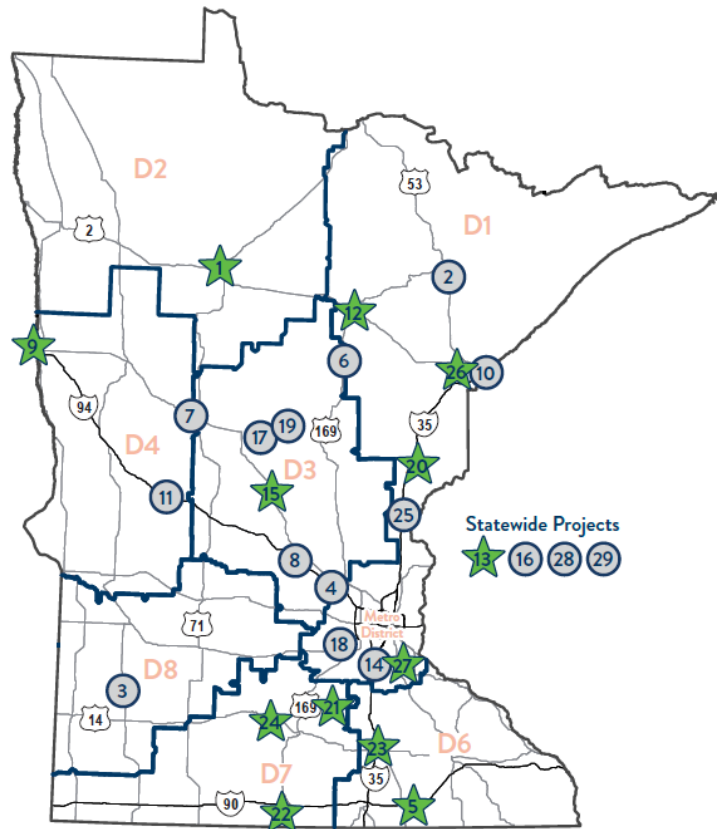
- Goals for FFY 2023 include more projects in underserved communities and on tribal lands
 - After observing the tribes were not submitting grant applications, MnDOT now provides technical assistance to tribes to develop projects and applications through SRF consultant services
 - MnDOT is partnering with Reconnect Rondo on a Reconnecting Communities and Neighborhoods Grant

MnDOT Grant Submitted and Awarded Projects

FFY 2022 - 2026

MnDOT BIL Grant Submitted and Awarded Projects

as of June 21, 2023



Legend	
	MnDOT District Boundaries
	Submitted Projects
	Awarded Projects



#	Project Description	Congr Dist	FFY	Grant	Amount Requested	Amount Awarded
1	TH 197/Paul Bunyan Drive in Bemidji	4	2022	RAISE	\$18 M	\$18 million
2	TH 53 Improvements at Rock Ridge Public Schools	8	2022, 2023	RAISE	\$25 M	-, pending
			2022	INFRA	\$24 M	-
3	Marshall Minnesota Highway 19 Reconstruction Project	4	2022	RAISE	\$13 M	-
			2023		\$15.39 M	pending
4	I-94 Gap Monticello to Albertville	6	2022	INFRA	\$60 M	-
				Mega		
5	I-90 Bridge Replacement in Austin	1	2022	INFRA	\$25 M	\$25 million (INFRA)
				BIP Bridge		
6	US 169 from Mississippi River to TH 200 in Hill City (Shoulder Widening)	8	2022	Rural	\$19 M	-
7	TH 10 Gap near Wadena (2 to 4 lane expansion)	8	2022	Rural	\$11.81 M	-
8	I-94/TH 24 Interchange Reconstruction in Clearwater	6	2022	Rural	\$19 M	-
9	Downtown Moorhead Safety, Mobility and Livability Railgrade Separation Project (City Submittal)	4	2022	RAISE	\$33.5 M	\$26.3 million (Rural)
			INFRA			
			Rural			
			Mega			
				RCE (MnDOT Submittal)		
10	I-535 Blatnik Bridge	8	2022	BIP Large	\$895 M	-
11	I-94 Bridge Bundle in Alexandria	4	2022	BIP Bridge	\$5.7 M	-
12	go MARTI-Minnesota's Autonomous Rural Transit Initiative (Letter of Support Only)	8	2022	ATTAIN	\$9.3 M	\$9.3 million
13	CDOT ATMA Work Zone Safety (Colorado DOT Joint Application)	N/A	2022	SMART	\$1.89 M	\$1.89 million
14	MAC Automated People Movers (APMs) (Letter of Support Only)	2	2022	SMART	\$1.8 M	-
15	TH 27 Mississippi River Bridge Grade Separation (City of Little Falls Submittal)	7	2022	CRISI	\$2.5 M	pending
				RCE Planning	\$3.2 M	\$3.2 million
16	Council of State Governments and Midwest Interstate Passenger Rail Commission - Invest Midwest (Letter of Support Only)	N/A	2022	CRISI	\$4 M	pending
17	Brainerd Hwy 371/Hwy 210/BNSF Railroad Grade Separation Project	8	2022	CRISI	\$2 M	pending
18	Twin Cities and Western Railroad - Continuous Rail Conversion (Letter of Support Only)	3	2022	CRISI	\$2.5 M	pending
19	Washington Street Reconstruction in Brainerd	4	2023	RAISE	\$24.98 M	pending
20	MnDOT Hinckley Corridor Crossing Elimination and Improvement Study	8	2022	RCE Planning	\$480 K	\$480 K
21	Minnesota River Valley Transit	1/2				
22	Prairie Lake Transit					
23	Southern Minnesota Area Rural Transit	1	2022	Low or No Emission	\$3.4 M	\$3.4 million
24	Heartland Express					
25	Northern Lights Express	3/6/8	2022	Corridor ID	\$500 K	pending
			2022	Fed-State Partnership	\$474 M	pending
26	Skyline Parkway Scenic Byway	8	2022	NSBP	\$1.5 M	\$1.5 M
27	All American Great River Road - Spring Lake Park Reserve, Fischer Avenue Trailhead	2	2022	NSBP	\$700 K	\$700 K
28	Reducing Emissions in Rural Minnesota Transit	N/A	2023	Low or No Emission	\$1.5 M	pending
29	Greater Minnesota EV Infrastructure Community Program	N/A	2022/2023	Charging and Fueling Infrastructure	\$8 M	pending

At-A-Glance Calendar

IIJA Discretionary Grant Opportunity	Federal Agency	FFY 2022									FFY 2023										
		Jan	Feb	Mar	Apr	May	Jun	July	Aug	Sept	Oct	Nov	Dec	Jan	Feb	Mar	Apr	May	Jun	July	Aug
RAISE (Planning) - Districts	OST	1/28	3/22	4/15				8/11					11/30	12/14	1/5	3/28		5/28			
RAISE (Capital) - Districts	OST	1/28	3/22	4/15				8/11					11/30	12/14	1/5	3/28		5/28			
Low or No Emission Grant Program and Grants for Buses and Bus Facilities - OTAT	FTA			3/7		5/31		8/16							7/27		4/13				
Charging and Fueling Infrastructure (CFI Program) - OTAT	FHWA														3/14		4/13				
PROTECT - Districts	FHWA																4/21			8/18	
MPDG - INFRA - Districts	OST			3/22		5/23		9/14													
MPDG - Mega - Districts	OST			3/22		5/23									1/30						
MPDG - Rural - Districts	OST			3/22		5/23									12/30						
Reconnecting Communities Pilot Program - Districts	OST							6/28		9/30		10/13			2/28						
BIP (Planning) - Districts/Bridge	FHWA					6/10		7/25				10/12									
BIP (Large Bridges) - Districts/Bridge	FHWA					6/10		8/9							9/4						
BIP (Bridge) - Districts/Bridge	FHWA					6/10				9/8							4/13				
Railroad Crossing Elimination - Districts/OFCVO	FRA					7/8				9/22		10/11								6/3	
SMART - CAV-X/OTE	OST-Research							9/19		10/12		11/18			3/20						
CRISI - Districts/OFCVO	FRA							9/1							12/1						
ATTIMD/ATTAIN - CAV-X/OTE	FHWA							9/19				11/18								5/25	
Fed-State Partnership for Intercity Passenger Rail - OFCVO	FRA													12/7		2/3		4/21			
Corridor Identification and Development Program - OFCVO	FRA													12/21			3/27				
Congestion Relief - Metro	FHWA																				
Strategic Innovation for Revenue - OFM	FHWA																				
On-the-Job Training Program - OCR	FHWA																				
National Motor Vehicle Per-Mile user fee Pilot - OFM	FHWA																				
Accelerated Implementation and Deployment of Advanced Digital Construction Management Systems	FHWA																				

LEGEND

- ◆ NOFO Released
- ◆ NOFO Amendment
- Submitted Application Due
- Award Date

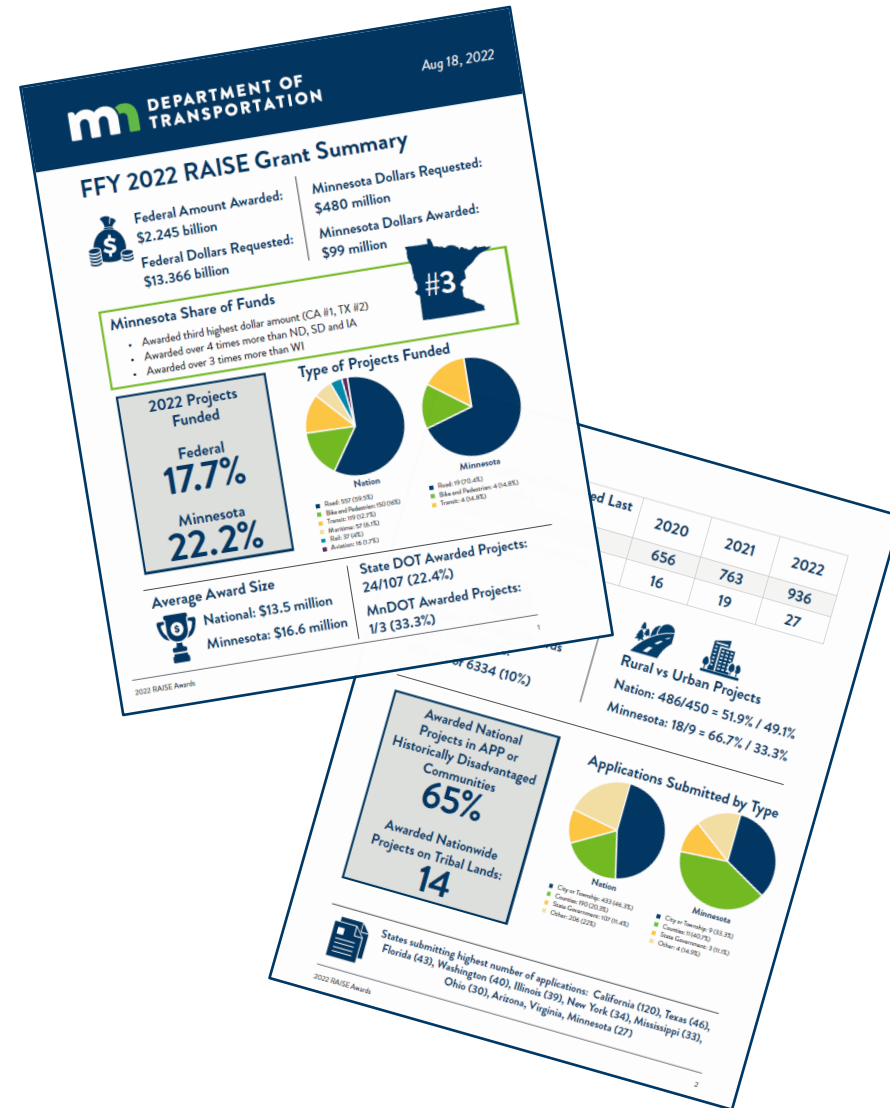


FFY 2022-2023 IIJA Grants at a Glance Calendar
(as of June 21, 2023)

Pre-Award — solicitations and applications--- Consulting Firm perspective

Lessons learned

- Be proactive – do your homework
- Prioritize your projects
- Develop a plan
- Use existing resources
- Consult your experts



Pre-Award — solicitations and applications---

Consulting Firm perspective

Tips and Tricks

- Time is precious - start early
- Partnerships – leverage your relationships
- Have a clear understanding of eligibility
- How much money do you need
- Versions of databases, tools



PROTECT Program Overview



PROTECT

\$1.4 billion for FY 22-26
\$848 million in FY 22/23

Match: 80/20 (Capital Projects)

Four Types:

- Planning Grants
- Resilience Grants
- Community Resilience and Evacuation Routes
- At Risk Coastal Infrastructure

Justice40 Screening:

- Primary – Climate and Economic Justice Screening Tool:
<https://screeningtool.geoplatform.gov/en/>
- Secondary – USDOT Transportation Disadvantaged Tracts:
<https://usdot.maps.arcgis.com/apps/dashboards/d6f90dfcc8b44525b04c7ce748a3674a>

Annual Funding Allocation:

FFY	Total	Planning	Resilience Improvement	Community Resilience and Evacuation Routes	Coastal Infrastructure
2022/23	\$848 M	\$45 M	\$638M	\$45 M	\$120 M
2024	\$300 M	\$30 M	\$210 M	\$30 M	\$30 M
2025	\$300 M	\$30 M	\$210 M	\$30 M	\$30 M
2026	\$300 M	\$30 M	\$210 M	\$30 M	\$30 M

FFY 2022/2023 NOFO Released April 21, 2023: <https://www.grants.gov/web/grants/view-opportunity.html?oppld=347585>

Applications Due: August 18, 2023

PROTECT Program Overview



Planning Grants

Up to \$45 M for FFY 22/23

Purpose of:

- Developing a resilience improvement plan;
- Resilience planning, predesign, design, or data tool development;
- Vulnerability assessment of surface transportation assets; or
- Evacuation planning and preparation.

Details:

- No BCA Required
- Minimum Award: \$100K
- Maximum Award: none defined



Resilience Grants (Capital)

Up to \$803 M for FFY 22/23

Grant Types:

- **Resilience Improvement** – improve the ability of an existing surface transportation asset to withstand natural disaster, or to increase the resilience from the impacts of changing conditions
- **Community Resilience and Evacuation Routes** – strengthen and protect evacuation routes. Includes states bordering the Great Lakes.
- **At-Risk Coastal Infrastructure** – to strengthen, stabilize, harden, elevate, relocate or otherwise enhance the resilience of highway and non-rail infrastructure face increased long-term future risks of, a weather event, a natural disaster, or changing conditions

Details:

- BCA Required: Resilience Improvement; Community Resilience and Evac. Routes
- Minimum Award: \$500K
- Maximum Award: none defined

PROTECT Merit Criteria



Planning Grants

1. Program Alignment
2. Schedule and Budget
3. Public Engagement, Partnerships, and Collaboration
4. Innovation



Resilience Grants

1. Vulnerability and Risk
2. Criticality to Community
3. Design Elements
4. Public Engagement, Partnerships, and Collaboration
5. Equity and Justice40
6. Climate Change and Sustainability
7. Schedule and Budget
8. Innovation



FHWA Priorities

Planning Grants:

1. Exceptional benefits under Public Engagement, Partnership, and Collaboration
2. Strong need for funding

Resilience Grants

1. Exceptional benefits under Equity and Justice40
2. Workforce Development, Job Quality, and Wealth Creation
3. Construction Readiness
4. Strong need for funding

\$15 billion for FFY 22-26

- Surface transportation infrastructure projects with significant national or regional impact
- Highway and bridge
- Intercity passenger rail
- Railway-highway grade crossing or separation
- Wildlife crossing
- Public transportation
- Marine highway
- Freight projects

MPDG Program Overview



INFRA

\$8 billion for FY 22-26
\$1.55 billion in FY22

- Highway freight projects carried out on the National Highway Freight Network
- Highway or bridge projects carried out on the National Highway System (NHS)
- Railway-highway grade crossing or grade separation projects
- Freight project that is
 - an intermodal or rail project, OR
 - within the boundaries of a public or private freight rail, water (including ports), a wildlife crossing project, or intermodal facility.



RURAL

\$2 billion for FY 22-26
\$300 million in FY 22

- Highway, bridge or tunnel project eligible under NHPP,
- STBG, Tribal Transportation Program, NHFP
- Highway safety improvement project, including improvements to high-risk rural roads as defined by HSIP
- Highway or bridge project that increases access to agricultural, commercial, energy or intermodal facility that supports rural economy
- Develop, establish, maintain integrated mobility management system, TDM, or on-demand mobility services



MEGA

\$5 billion for FY 22-26
\$1 billion in FY 22

- Highway and bridge projects on national multimodal freight networks
- Highway and bridge projects on national highway freight networks
- Highway and bridge projects on national highway systems, freight multimodal (including ports), or freight rail projects benefitting the public;
- Railway highway grade separation or elimination projects
- Intercity passenger rail projects
- Certain public transportation projects

MPDG Project Eligibility

RURAL

- Outside urban area with 2010 population over 200,000
- 132 projects

MEGA and INFRA Large

- Projects over \$100 million
- 9 projects

INFRA Small

- Projects between \$1 - \$100 million

BIP Program Overview

Bridge Investment Program

Grant Types:

- Large Bridge (projects that exceed \$100 M in eligible cost)
- Bridge (projects under \$100 M)
- Planning

FFY 2022 Awards:

Type	#	Average \$	Total \$
Large	4	\$523 M	\$2.09 B
Bridge	9	\$32.9 M	\$296 M
Planning	23	\$800 M	\$18 M

FFY 23 Funding Overview:

Program	FFY 2023	FFY 2024	FFY 2025	FFY 2026
Contract authority	\$640 M	\$650 M	\$675 M	\$700 M
Advance Appropriation	\$1.847 B	\$1.847 B	\$1.847 B	\$1.847 B
Total	\$2.487 B	\$2.497 B	\$2.522 B	\$2.547 B

BIP Fact Sheet: https://www.fhwa.dot.gov/bipartisan-infrastructure-law/bip_factsheet.cfm

FFY 2022 NOFO: <https://www.grants.gov/view-opportunity.html?dpp=1&opId=341050>

BIP FFY 2022 Program Overview



Planning Grants

Outcome Criteria:

- BIP Program Goals
- Project Description
- Project Schedule
- Project Budget

Details:

- No BCA Required
- Minimum Award: none defined
- Maximum Award: none defined



Capital Grants (Large and Bridge)

Up to \$803 M for FFY 22/23

Outcome Criteria:

- State of Good Repair
- Safety
- Mobility and Economic Competitiveness
- Climate Change, Resiliency, and the Environment
- Quality of Life
- Innovation

Other Evaluation Standards:

- Statutory Evaluation Requirements
- Statutory Secretarial Considerations
- Statutory Required Project Selection Priorities

Details:

- BCA Required
- Minimum Award: Large - \$50 M; Bridge - \$2.5 M
- Maximum Award: Large - 50% of project cost; Bridge – 80% of project cost

RCN Program Overview



Reconnecting Communities and Neighborhoods Program

Combined NOFO coming “soon”

(per USDOT email on June 14)

- Reconnecting Communities Pilot Program (RCP) - IIJA
- Neighborhood Access and Equity Program (NAE) – Inflation Reduction Act

Grant Types:

- Capital Construction
- Community Planning
- Regional Partnerships Challenge

FFY 23 Funding Overview:

Program	Capital Construction	Community Planning	Regional Partnerships Challenge
Reconnecting Communities	\$148 M	\$50 M	-
Neighborhood Access and Equity Program	\$1 B	\$135 M	\$450 M
Total	\$1.15 B	\$185 M	\$450 M

Reconnecting Communities Webpage: <https://www.transportation.gov/grants/rcnprogram>

Neighborhood Access and Equity Program: https://www.fhwa.dot.gov/inflation-reduction-act/fact_sheets/nae_grant_program.cfm

RCN Grant Type Overview



Capital Construction

\$1.15 billion in FFY 23

To fund projects that are:

- Reconnecting-focused;
- Focused on reducing environmental harm; and
- Focused on improving access in disadvantaged communities.

Projects may address:

- A dividing facility;
- Mitigating a “burdening” facility; or
- Improving access



Community Planning

\$185 million in FFY 23

To fund planning activities that:

- Support future construction projects; and
- Allow for innovative community planning.

Projects may address:

- Planning to restore community connectivity;
- Community engagement;
- Environmental assessment; and
- Developing anti-displacement policies.



Regional Partnerships

\$455 million in FFY 23

To incentivize and strengthen partnerships between:

- Local governments
- Tribal governments
- MPOs/RPOs
- State DOTs
- Community partners

Partnership Goal – to address mobility challenges and/or reduce GHG emissions.

Applications must consist of a partnership between agencies