

# CONNECTED VEHICLE PILOT

## Deployment Program



## TAMPA HILLSBOUROGH EXPRESSWAY AUTHORITY CV PILOT



**Program Manager: Bob Frey, AICP**



# CV PILOT DEPLOYMENT PROGRAM GOALS





# THE THREE PILOT SITES



- Reduce the number and severity of adverse weather-related incidents in the I-80 Corridor in order to improve safety and reduce incident-related delays.
- Focused on the needs of commercial vehicle operators in the State of Wyoming.



- Improve safety and mobility of travelers in New York City through connected vehicle technologies.
- Vehicle to vehicle (V2V) technology installed in up to 8,000 vehicles in Midtown Manhattan, and vehicle to infrastructure (V2I) technology installed along high-accident rate arterials in Manhattan and Central Brooklyn.

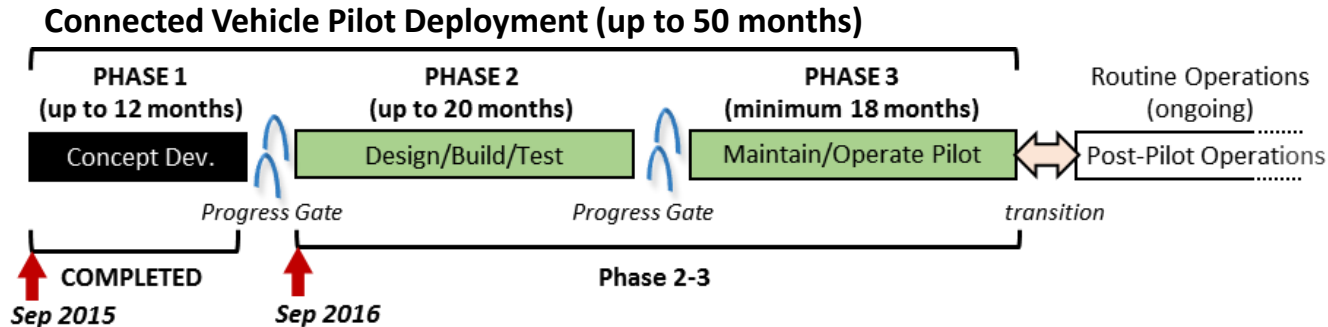


- Alleviate congestion and improve safety during morning commuting hours.
- Deploy a variety of connected vehicle technologies on and in the vicinity of reversible express lanes and three major arterials in downtown Tampa to solve the transportation challenges.





# CV PILOT DEPLOYMENT SCHEDULE

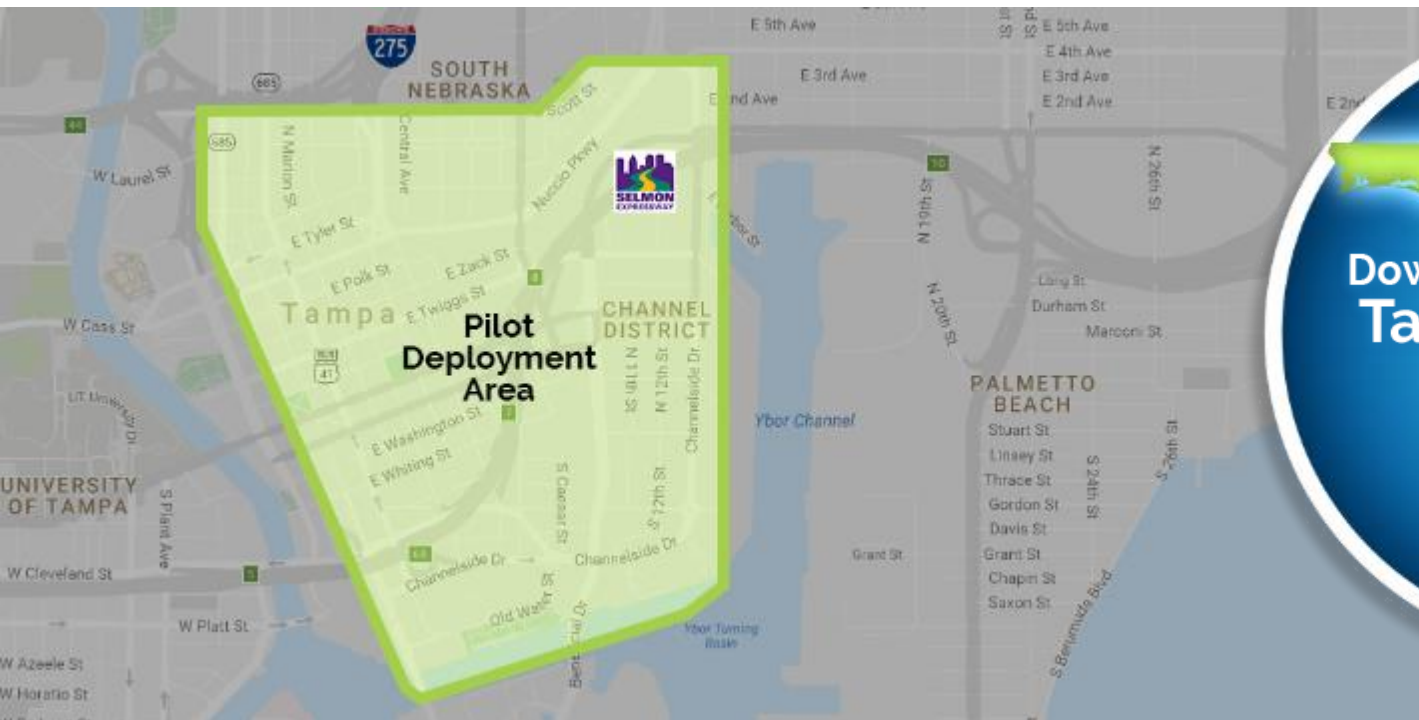


- **Phase 1: Concept Development (COMPLETE)**
  - Creates the foundational plan to enable further design and deployment
  - **Progress Gate: Is the concept ready for deployment?**
- **Phase 2: Design/Deploy/Test (CURRENT PHASE- began September 1, 2016)**
  - Detailed design and deployment followed by testing to ensure deployment functions as intended (both technically and institutionally)
  - Progress Gate: Does the system function as planned?
- **Phase 3: Maintain/Operate**
  - Focus is on assessing the performance of the deployed system
- **Post Pilot Operations (CV tech integrated into operational practice)**





# TAMPA (THEA) PILOT DEPLOYMENT OVERVIEW





# TAMPA (THEA) PILOT DEPLOYMENT OVERVIEW





# Participants

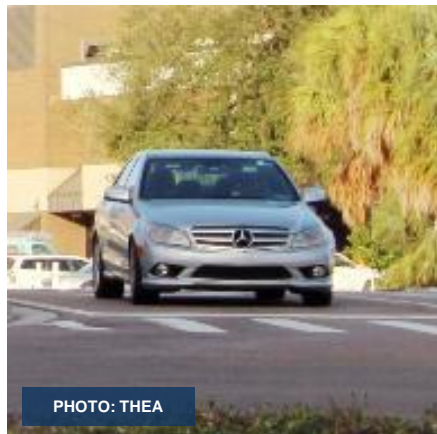


PHOTO: THEA

1,600



PHOTO: NPR

500+



PHOTO: THEA

10



PHOTO: THEA

10





# Morning Backup



**Forward Collision  
Warning (FCW)**

**Emergency  
Electronic Brake  
Light (EEBL)**

**End of Ramp  
Deceleration  
Warning (ERDW)**

**Intelligent Signal  
Systems (I-SIG)**





# Wrong-Way Drivers



**Wrong-way  
Entry**

**Intersection  
Movement  
Assist (IMA)**

**MAP**

**Signal Phasing  
and Timing  
(SPaT)**



# Pedestrian Safety



**Pedestrian in a  
Signalize  
Crosswalk  
Warning (Ped-X)**

**Pedestrian  
Collision Warning  
(PCW)**





# Transit Signal Priority



**I-SIG**

**Transit Signal  
Priority (TSP)**

**IMA**

**Pedestrian  
Transit  
Movement  
Warning  
(PTMW)**



# Streetcar Conflicts



Vehicle Turning  
Right in Front of  
Transit Vehicle  
(VTRFTV)

PTMW





# Traffic Progression



**Probe Data  
Enabled Traffic  
Monitoring  
(PDETM)**

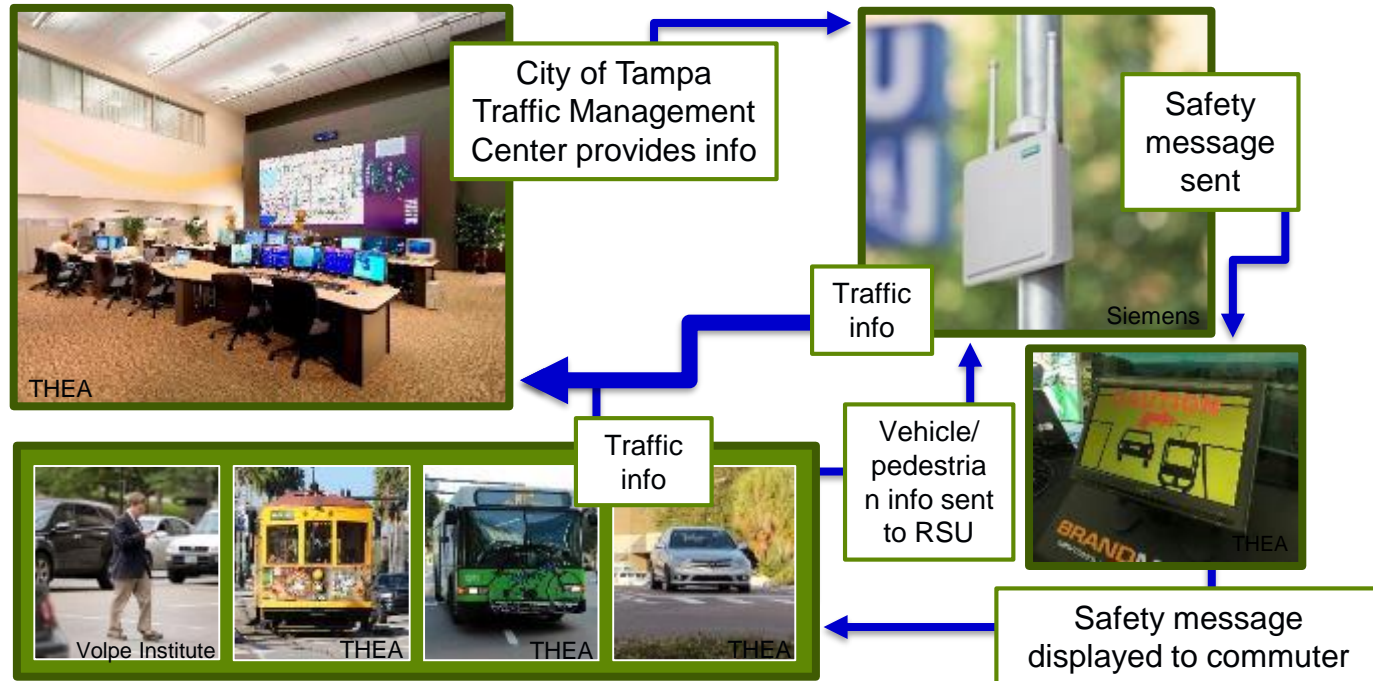
**Pedestrian  
Mobility (PED-SIG)**

**I-SIG**

**IMA**



# Information Flow





# RSU Photos



Source: Siemens



# HMI Photos



Mirror display uses sticker to depict location and concept of warning.  
Actual image is still in development

Source: Brand Motion and Global 5

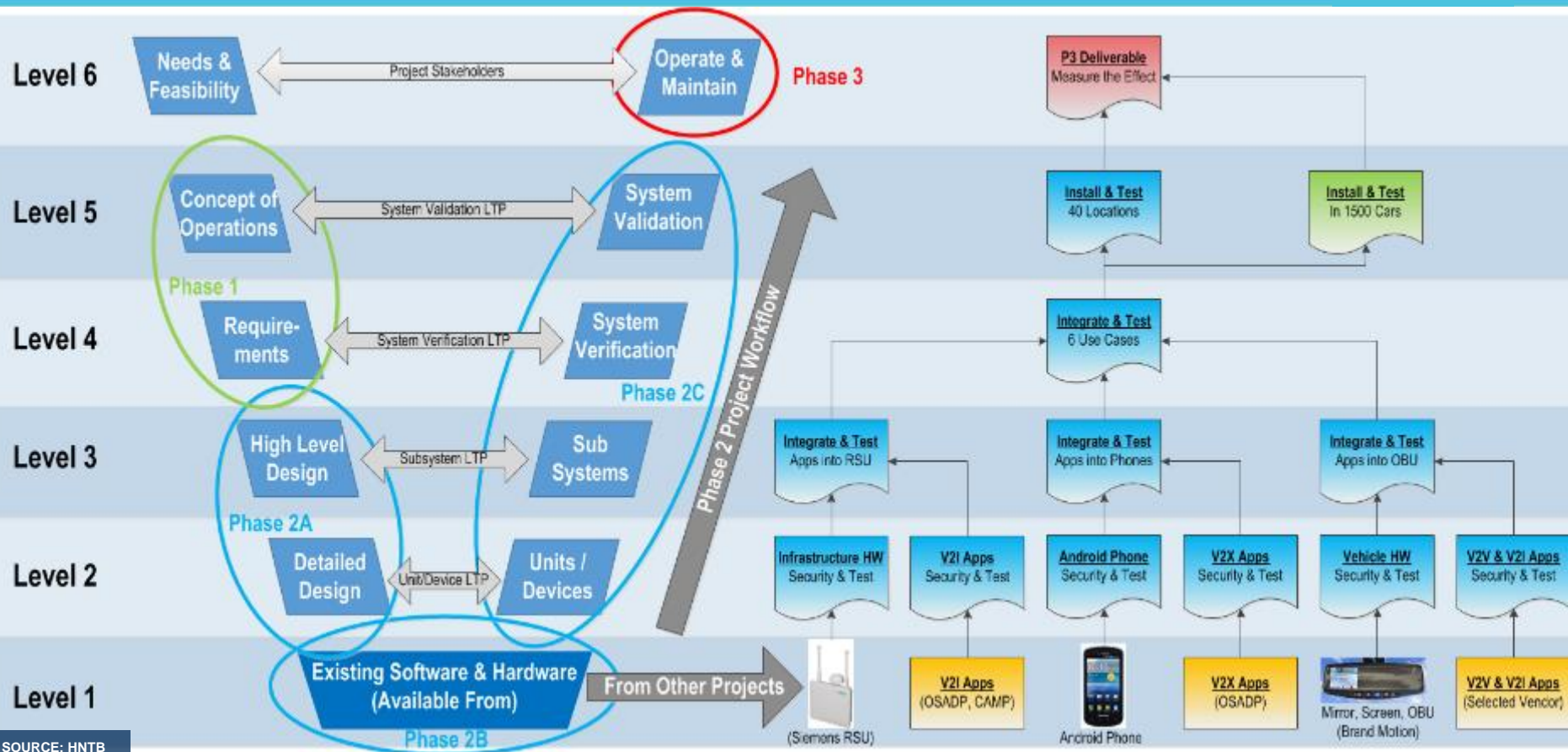


# Benefits





# Status





# STAY CONNECTED



**Robert M. Frey, AICP,**  
**Planning Director**  
**Tampa-Hillsborough**  
**Expressway Authority**  
(813) 272-6740, ext. 203  
bobf@tampa-xway.com



**TampaCVpilot.com**



**/TampaCVpilot**



**@Tampa\_CV**



**@TampaCV**



U.S. Department of Transportation